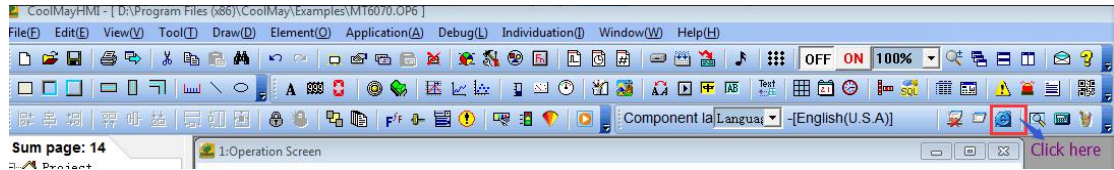


Steps of monitoring HMI via Ethernet under English system

1. Click [Ethernet] in the software

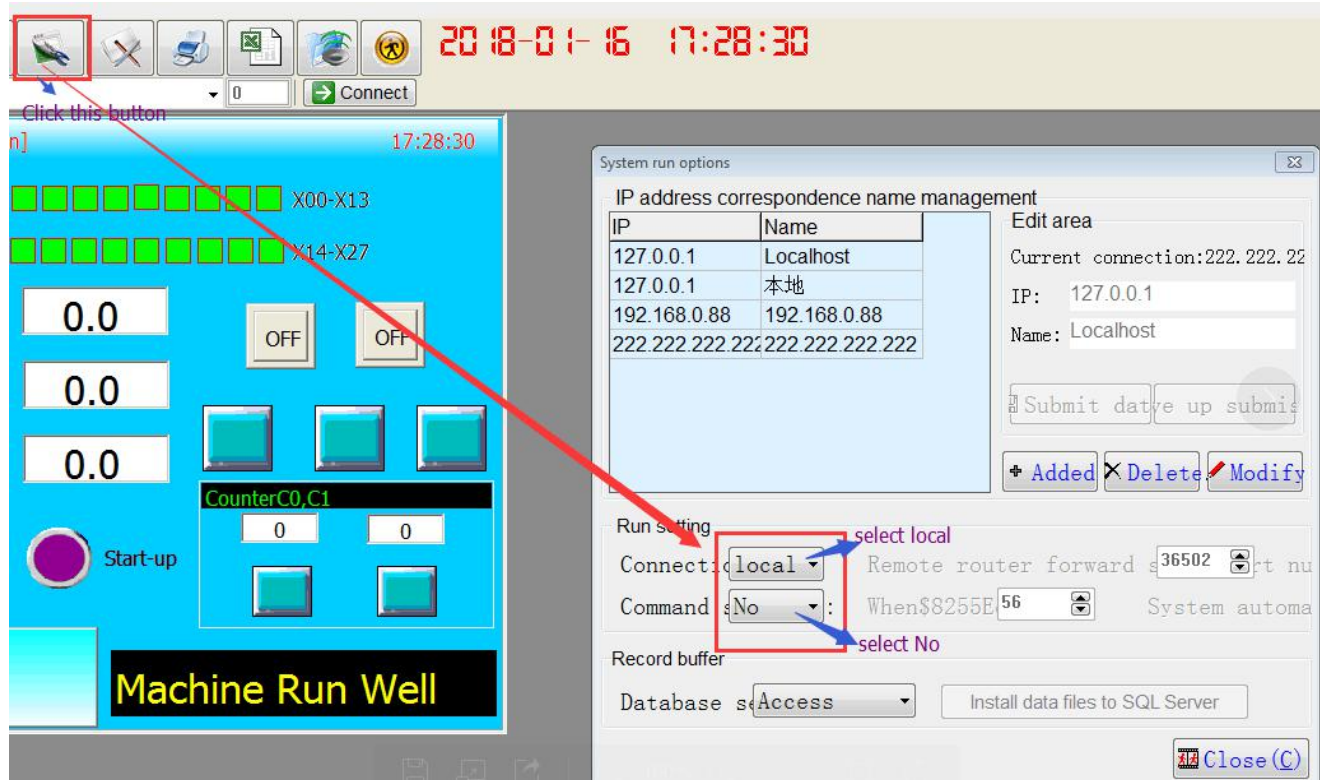


2. Enter into Ethernet monitoring page



Click **【System run options】** button,

3. In dialog box [System run options], set [connection type]=local, as below image shown:



4. Click **【Close】** after completing step 3
5. Select IP address as 222.222.222.222, click **【Connect】** button, as the below image shown:

