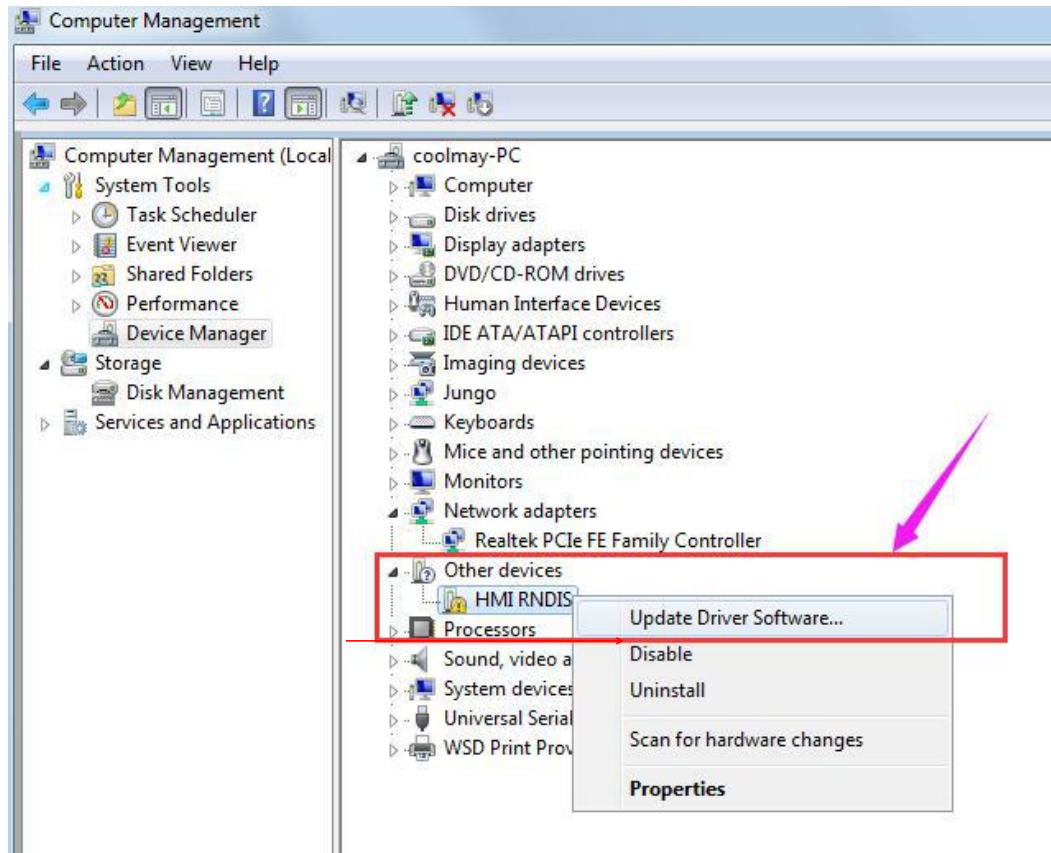
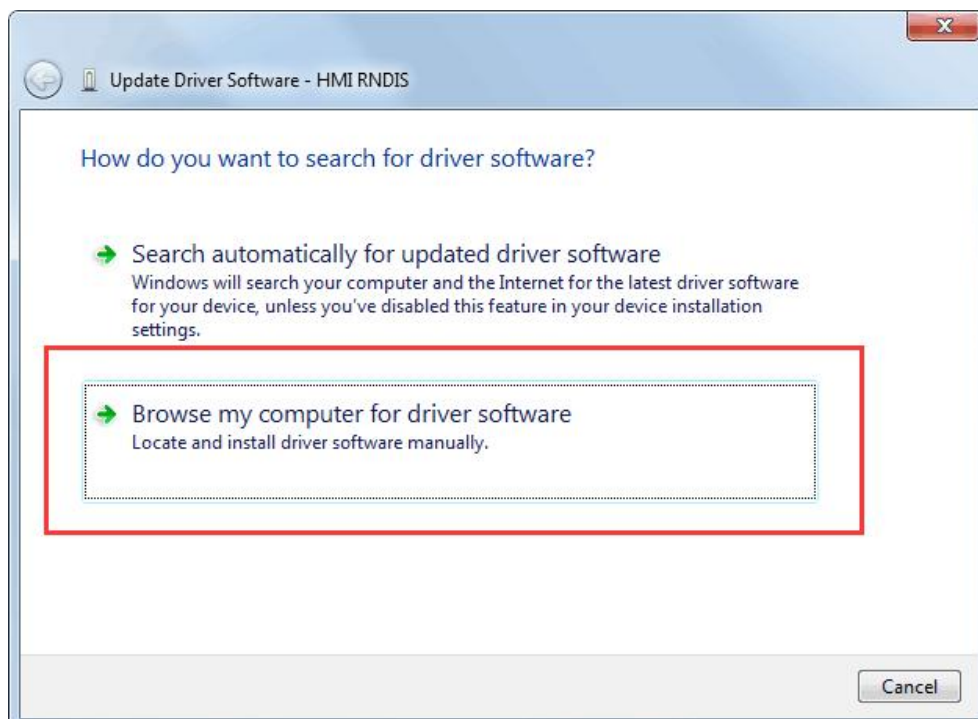


Install HMI RNDIS drive in WIN7

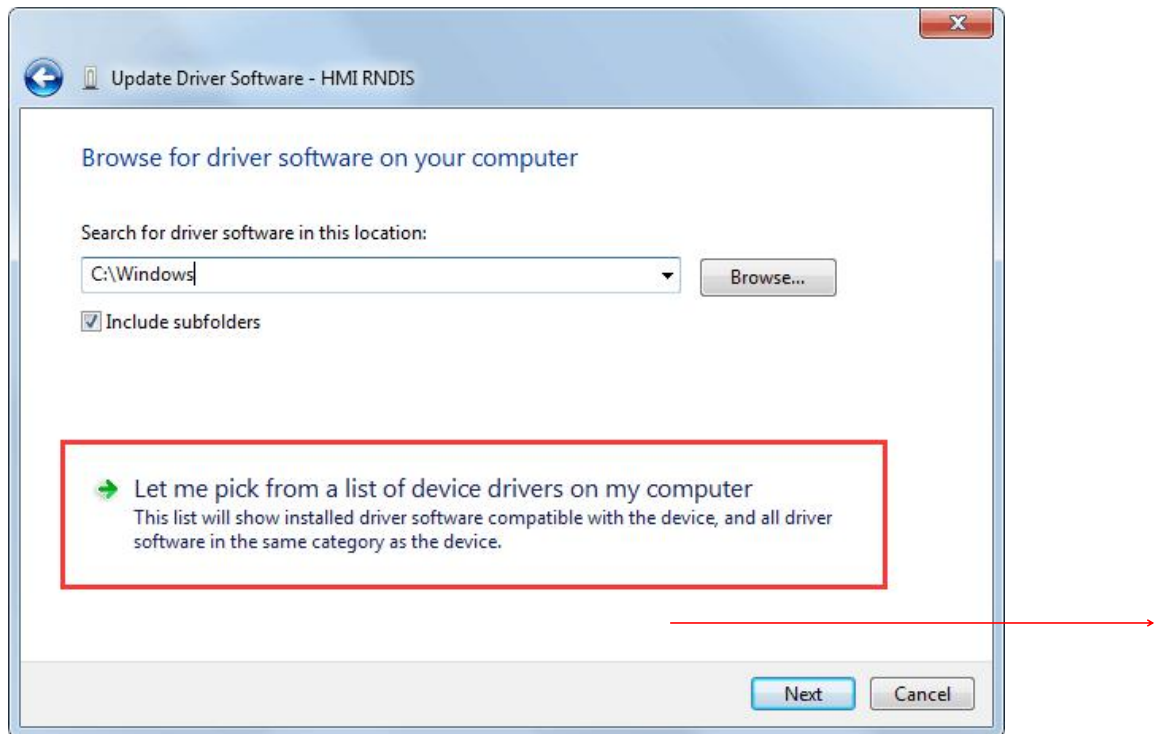
1. Please find HMI RNDIS this drive in other equipment in device manager. Right click this drive and choose **“update drive Software”**



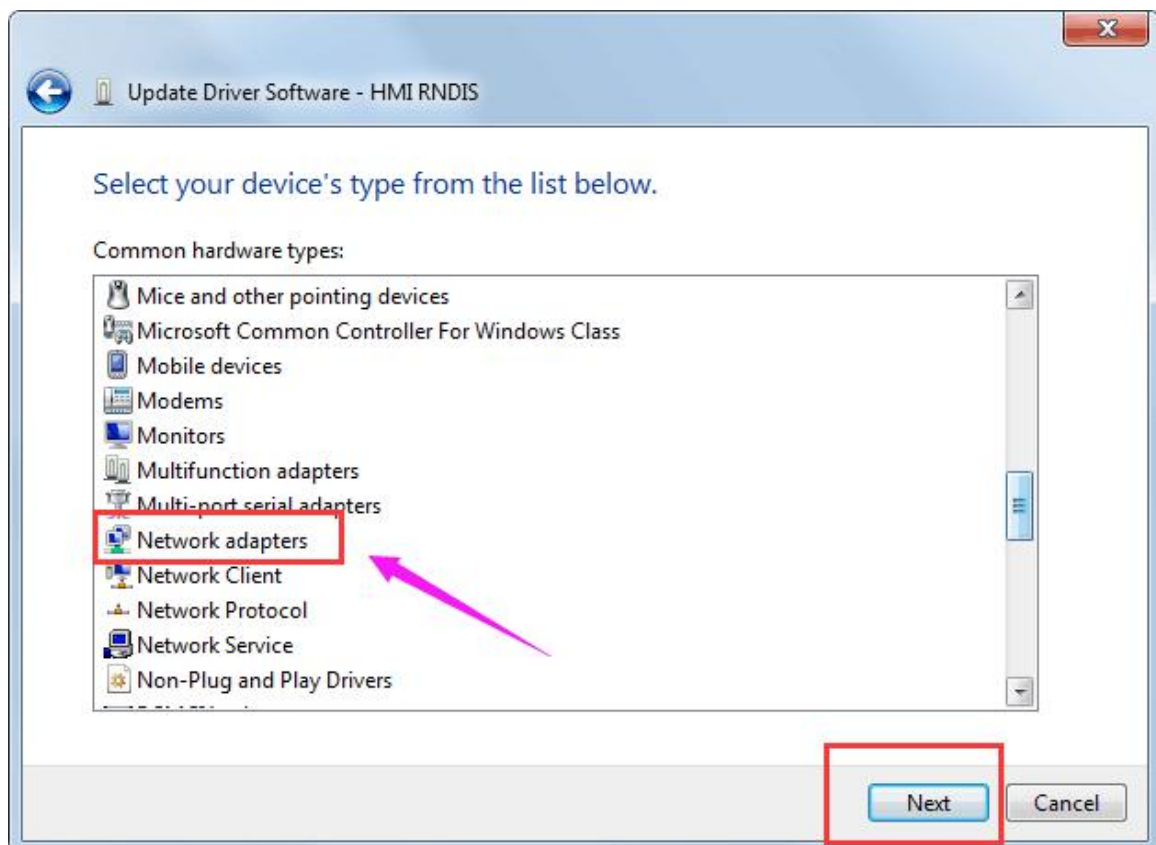
2. Click **“Browse my computer for driver software”**



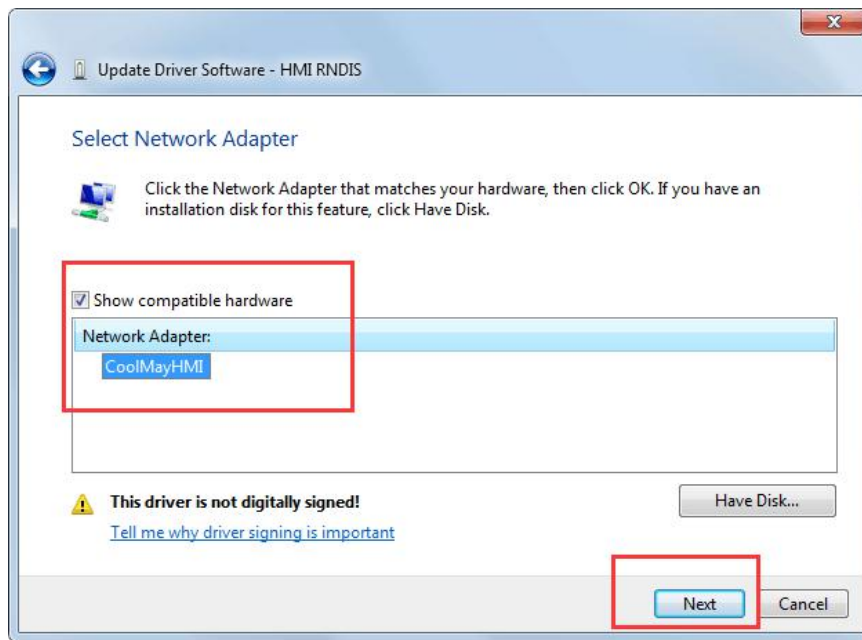
3. Click **“Let me pick from a list of device drivers on my computer”**



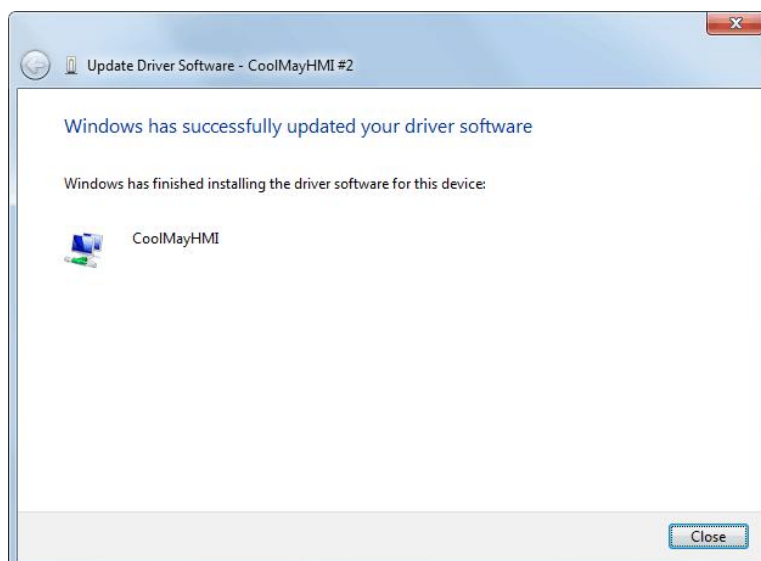
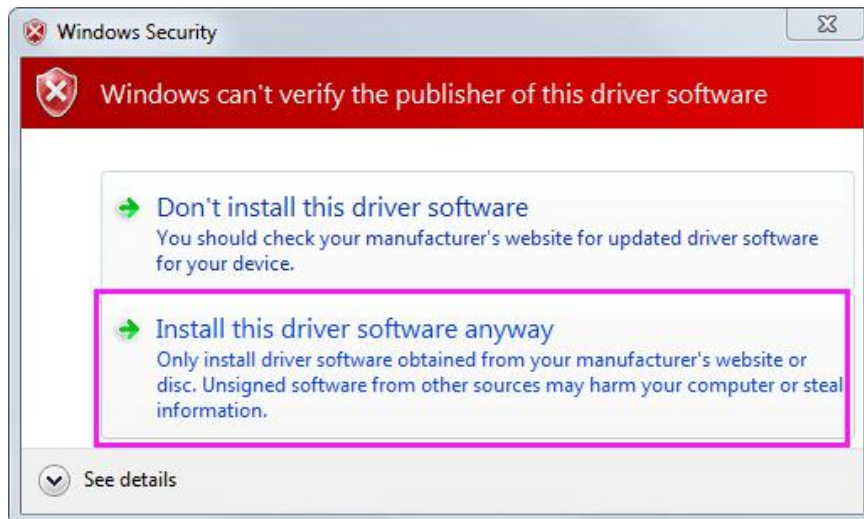
4. Click **“network adaptor”** , click next



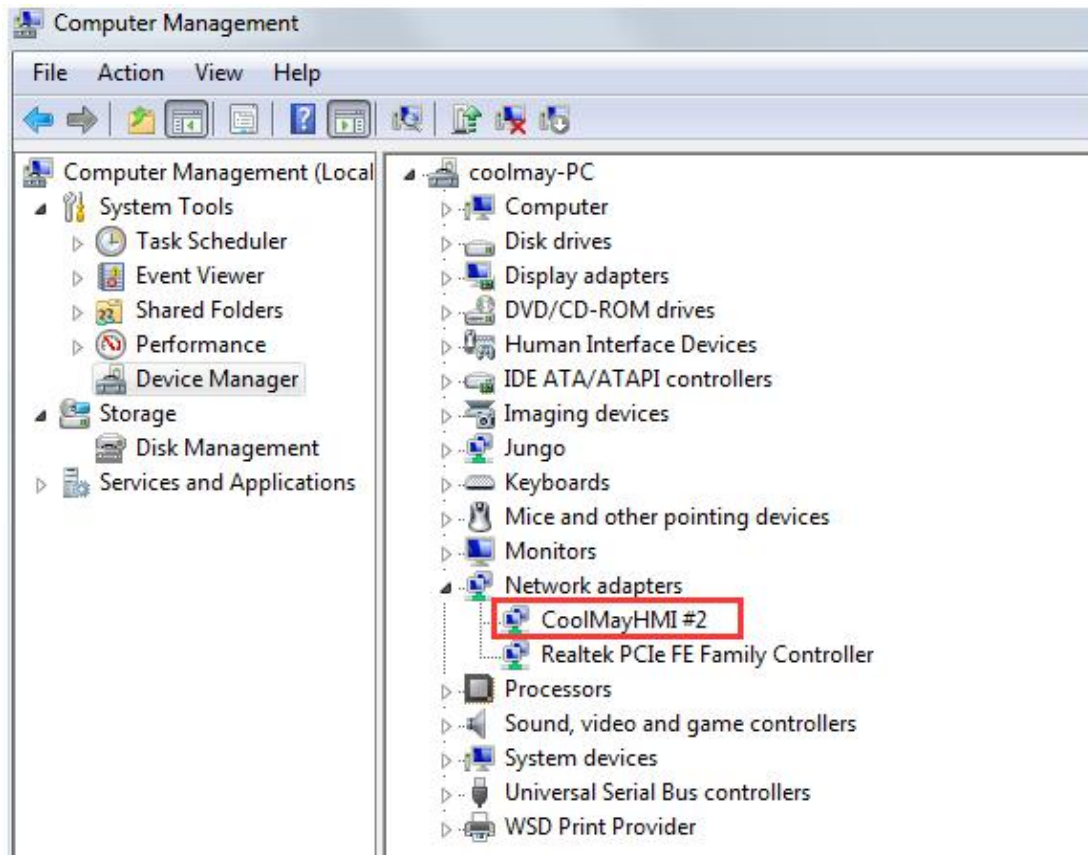
5. Choose "coolmayHMI", click next



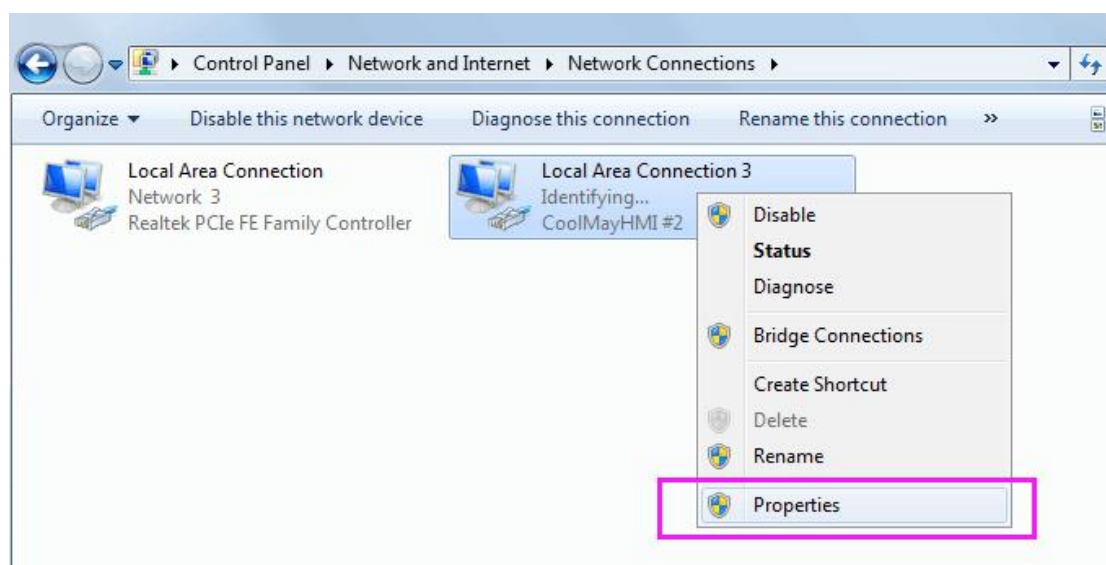
6. Select "install this driver software anyway" to complete the installation;



7. At this point, CoolMayHMI will be added to the network adapter, and the corresponding local connection will be added in the network connection.

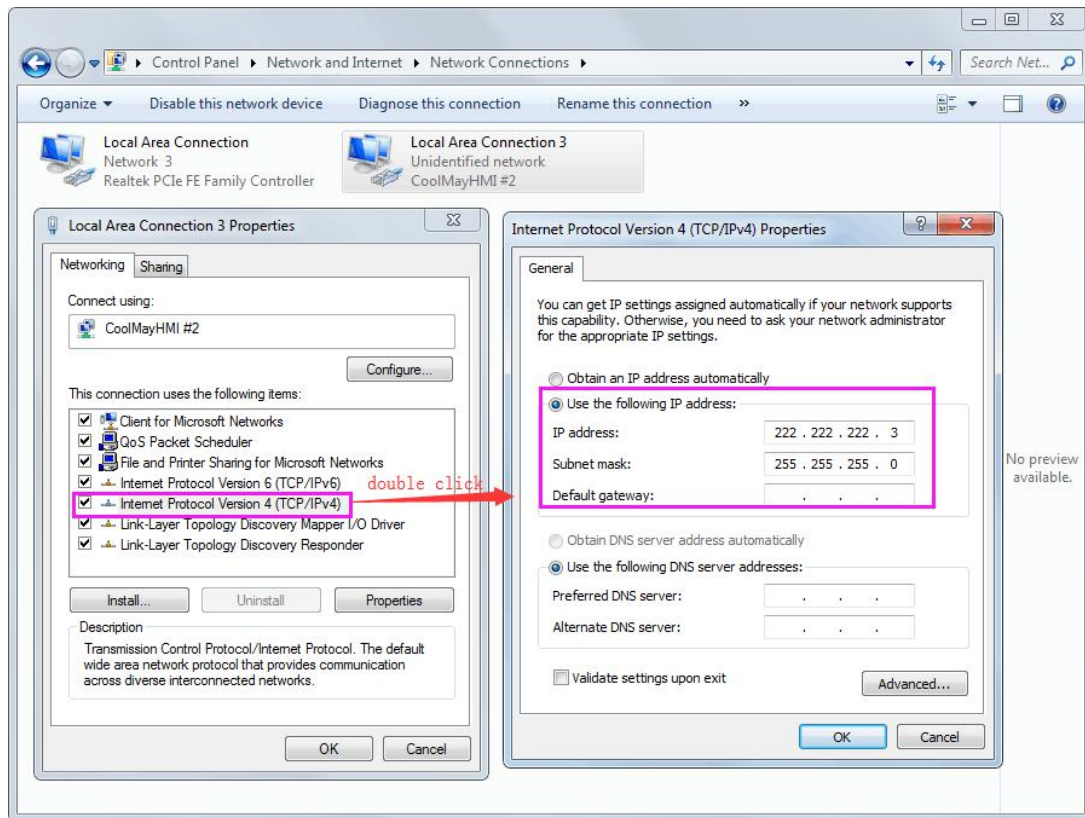


8. Fixed IP, right click - Properties

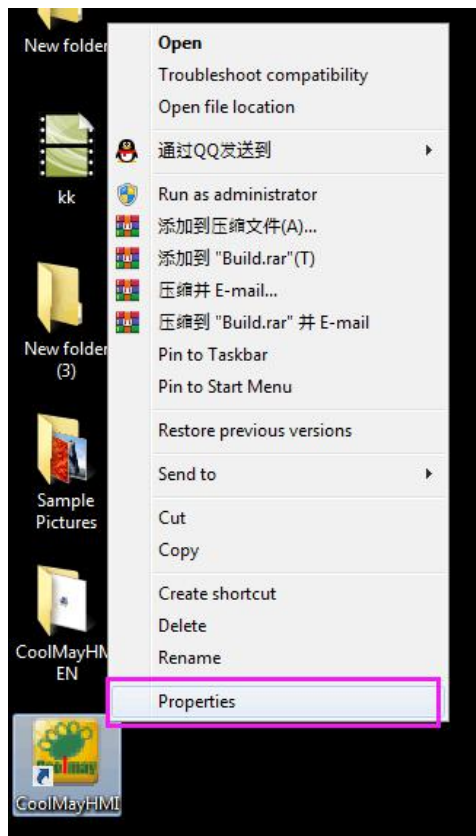


9. Select the IP address below, the IP address can be set to **222.222.222.*** (the last digit can be set to any value in the range of 2~221), and the subnet mask is fixed to

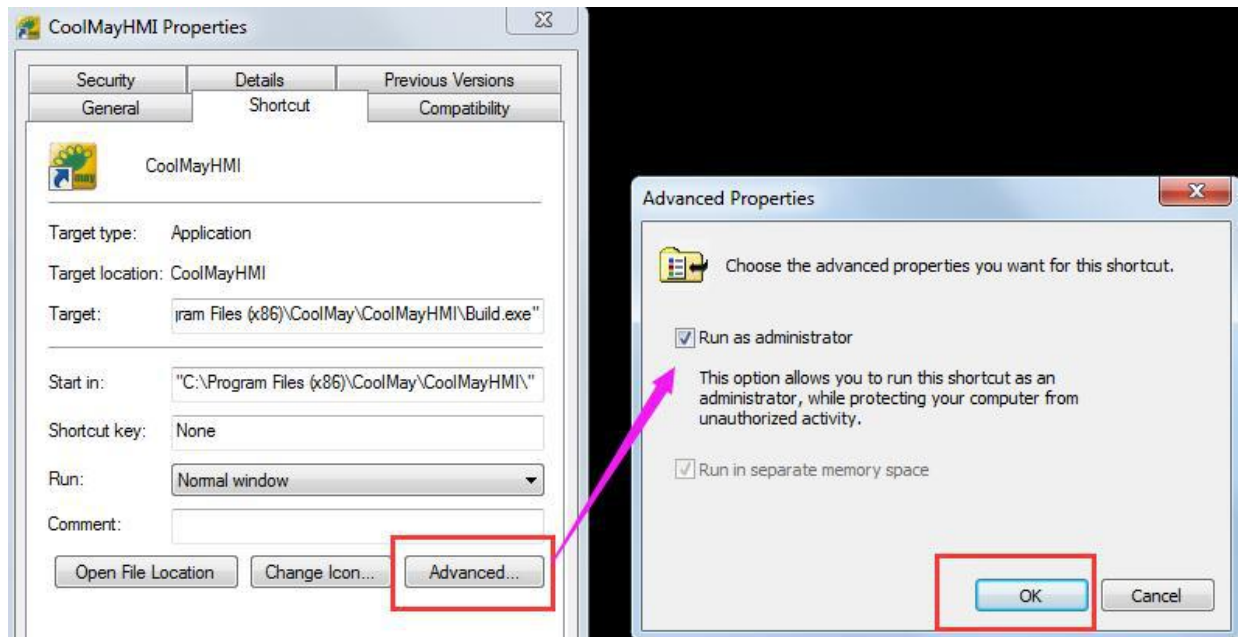
255.255.255.0.



10. The software needs to run as an administrator, right click on the CoolMayHMI software and click on Properties.



11. Click Advanced, check the “**Run as administrator**” option. and then make sure that each time you open it, you will run the software as an administrator.



12. Finally, select "**Account Control Settings**" and pull to "**Never notify**"

