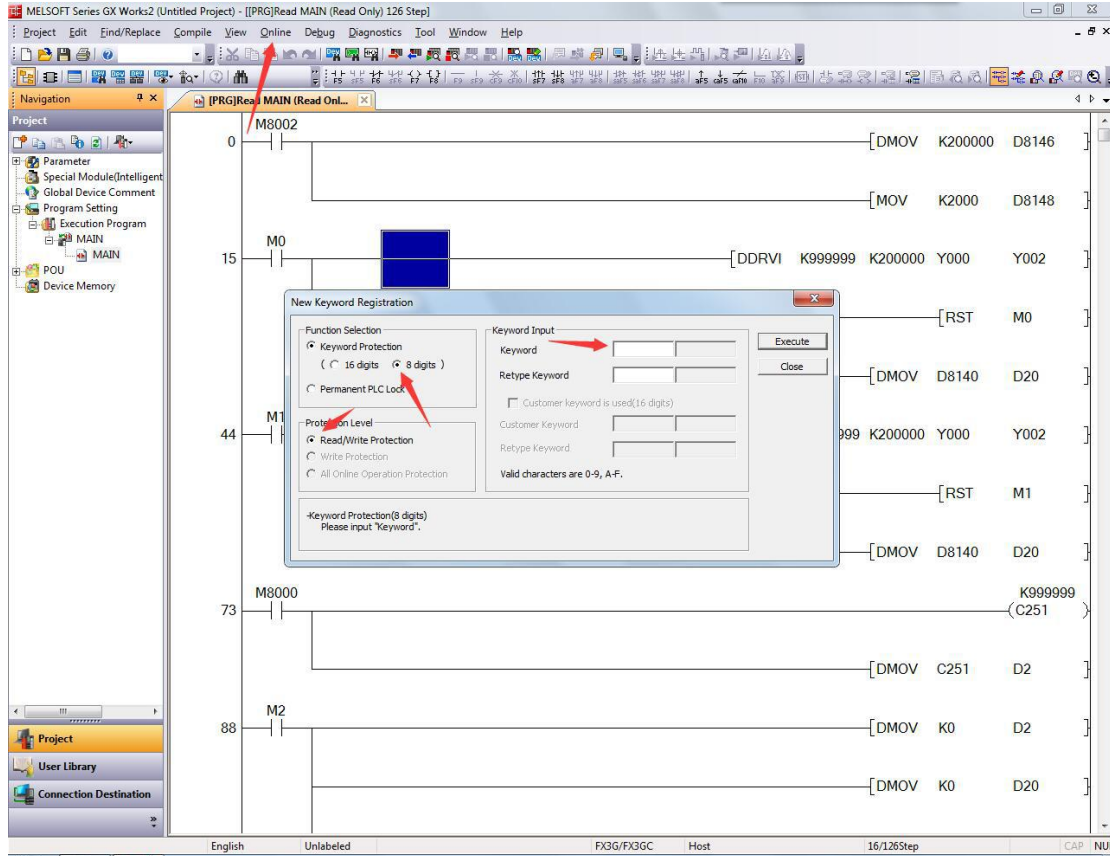


PLC Encryption

1, Connect PLC to pc well, and then open the plc program in the software.

2, “online”, “Password/keyword” PLC to stop statue.



3, Keyword protection "8digitals", Condition "read/write protection", keyword input "12345678" as above picture, then Execute.

Save file after completed. Next time you open it to download to plc, it will ask you to input password, namely is in encryption.

4, The encrypted PLC cannot be read and downloaded, even if you know the password .

MELSOFT Series GX Works2 (Untitled Project) - [[PRG]Read MAIN (Read Only) 126 Step]

Project Edit Find/Replace Compile View Online Debug Diagnostics Tool Window Help

Navigation: [[PRG]Read MAIN (Read On...]

Transfer Setup Connection1

PC side I/F: Serial USB, CC IE Cont NET/10(H) Board, CC-Link Board, Ethernet Board, CC IE Field Board, Q Series Bus, NET(I) Board, PLC Board

COM: COM 3, Transmission Speed: 115.2Kbps

PLC side I/F: PLC Module, CC IE Cont NET/10(H) Module, CC-Link Module, Ethernet Module, C24, GOT, CC IE Field Master/Local Module, Head Module

PLC Mode: FXCPU

Other Station Setting: No Specification

Time Out (Sec.):

Network Communication Route: CC IE Cont NET/10(H)

Co-existence Network Route: CC IE Cont NET/10(H), CC IE Field, Ethernet, CC-Link, C24

Accessing Host Station

Multiple CPU Setting: 1 2 3 4

Target PLC: Target System:

MELSOFT Application: Successfully connected with the FX3G/FX3GCCPU.

Connection Channel List...
PLC Direct Coupled Setting
Connection Test
IC Type: FX3G/FX3GC
System Image...
TEL (FXCPU)...
OK
Cancel

NOV K200000 D8146
OV K2000 D8148
0000 Y000 Y002
[RST M0
NOV D8140 D20
0000 Y000 Y002
[RST M1
NOV D8140 D20
K999999
(C251
NOV C251 D2
NOV K0 D2
[DMOV K0 D20

English Unlabeled FX3G/FX3GC Host 16/126Step CAP NUN

Project Edit Find/Replace Compile View Online Debug Diagnostics Tool Window Help

Navigation: [[PRG]Read MAIN (Read On...]

Project: Parameter, Special Module(Intelligent), Global Device Comment, Program Setting, Execution Program, MAIN, POU, Device Memory

0 M8002 [DMOV K200000 D814
[MOV K2000 D814
15 M0 [DDRVI K999999 K200000 Y000 Y002
[RST M0
[DMOV D8140 D20
44 M1 9999 K200000 Y000 Y002
[RST M1
[DMOV D8140 D20
73 M8000 K999
(C251
[DMOV C251 D2

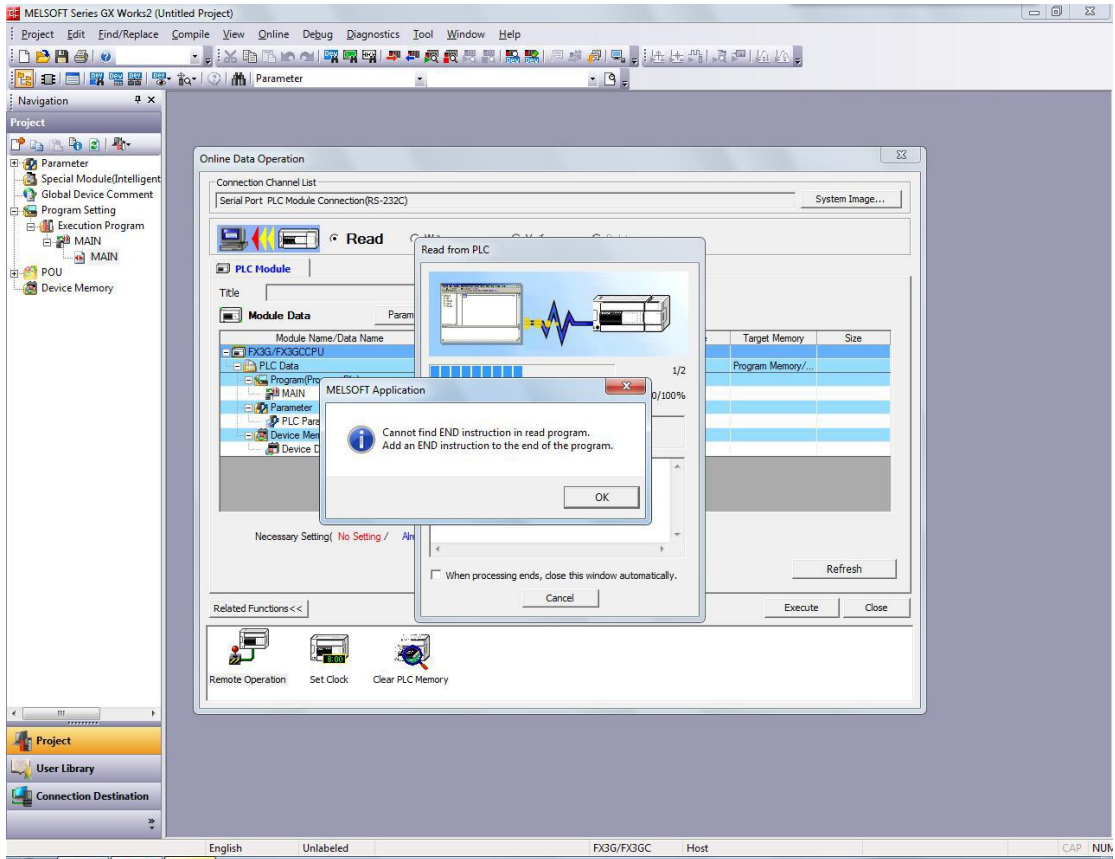
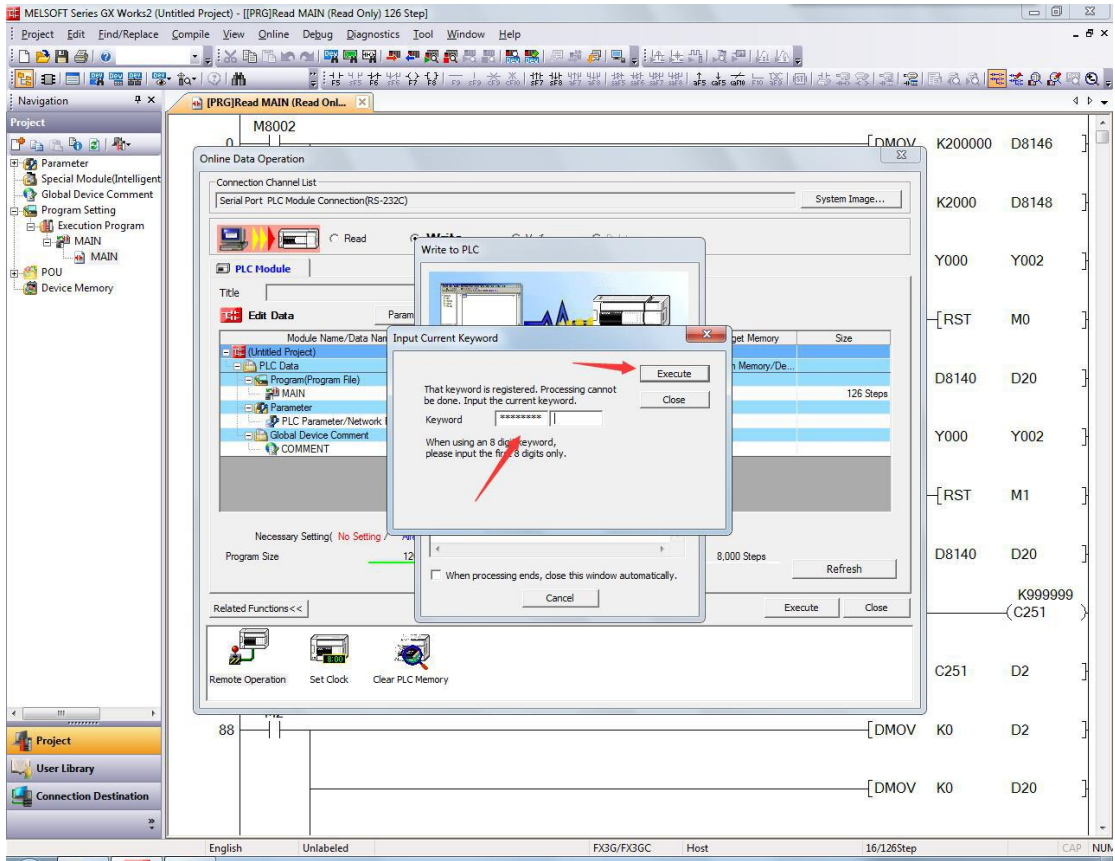
Remote Operation

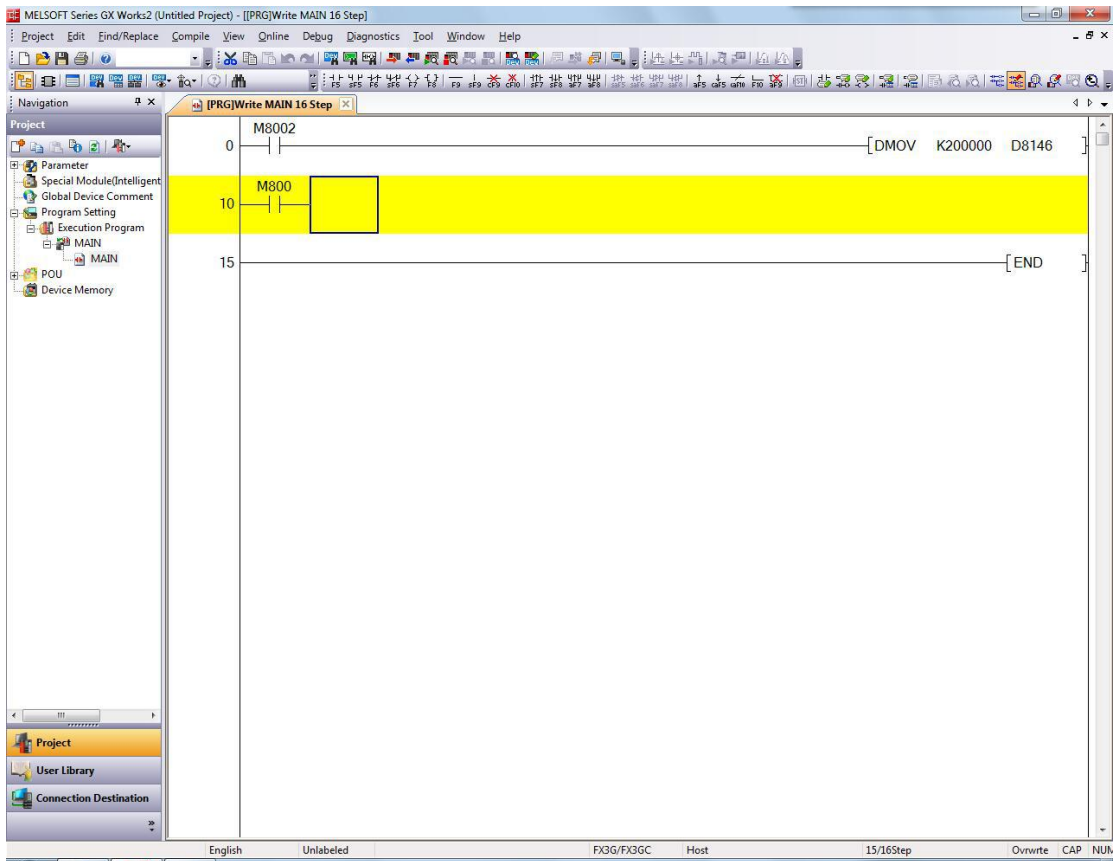
Connection Channel List
Connection Interface: COM3 <-> PLC Module
Target PLC: Network No. Station No. Host PLC Type FX3G/FX3GC

LED Status: POWER, RUN, ERROR, ALARM

Operation: RUN, STOP

Close





5, If you need to download it again, then need to clear the plc.

